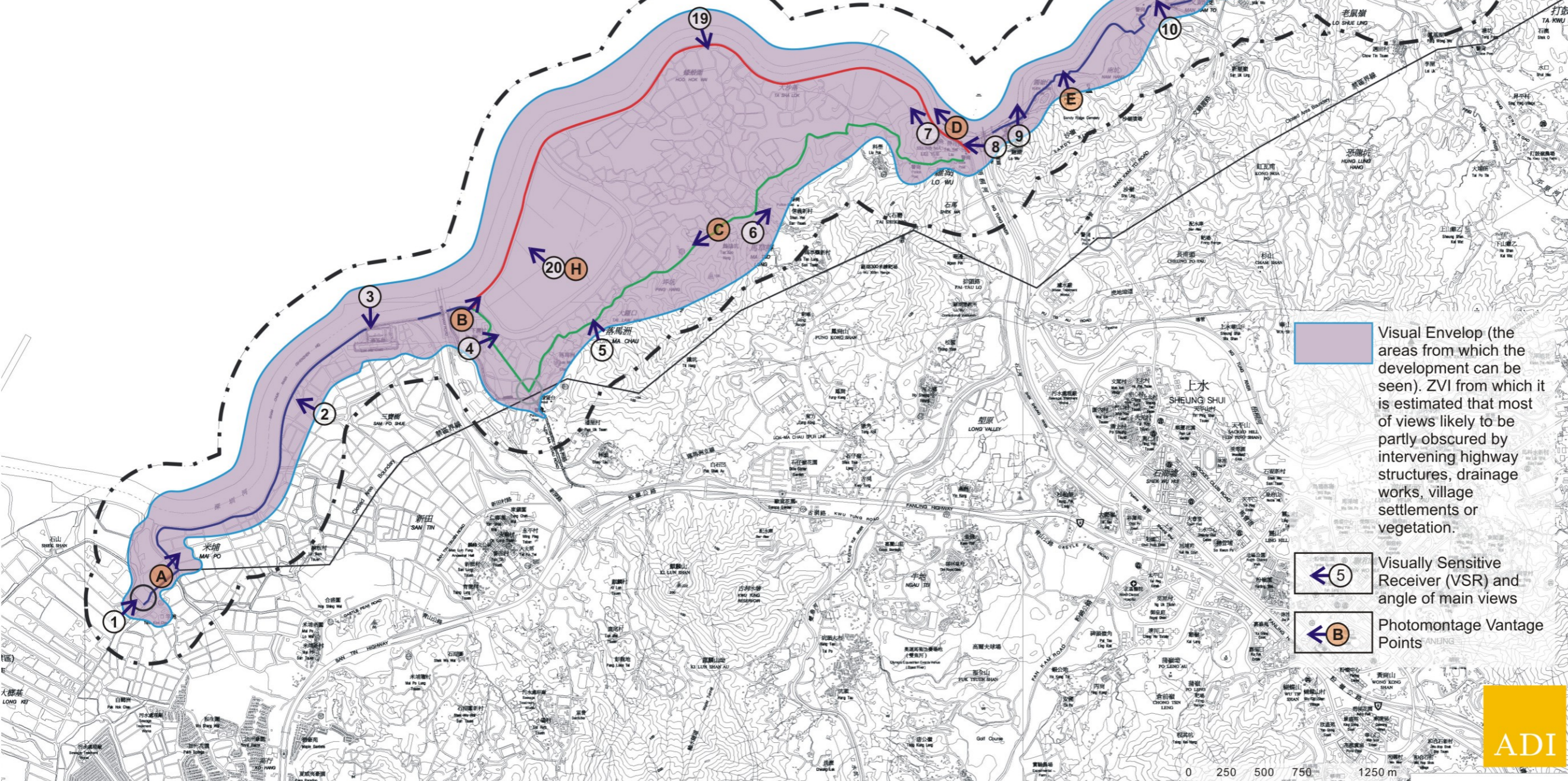


KEY PLAN

落馬洲河套區



- Legend**
- 500M Study Area
 - Frontier Closed Area
 - Proposed secondary boundary fence along existing boundary patrol road
 - Proposed new boundary patrol road with primary and secondary boundary fences
 - Existing boundary fence to be removed
 - Existing check point to be removed
 - Proposed new check point

Visual Envelop (the areas from which the development can be seen). ZVI from which it is estimated that most of views likely to be partly obscured by intervening highway structures, drainage works, village settlements or vegetation.

Visually Sensitive Receiver (VSR) and angle of main views

Photomontage Vantage Points

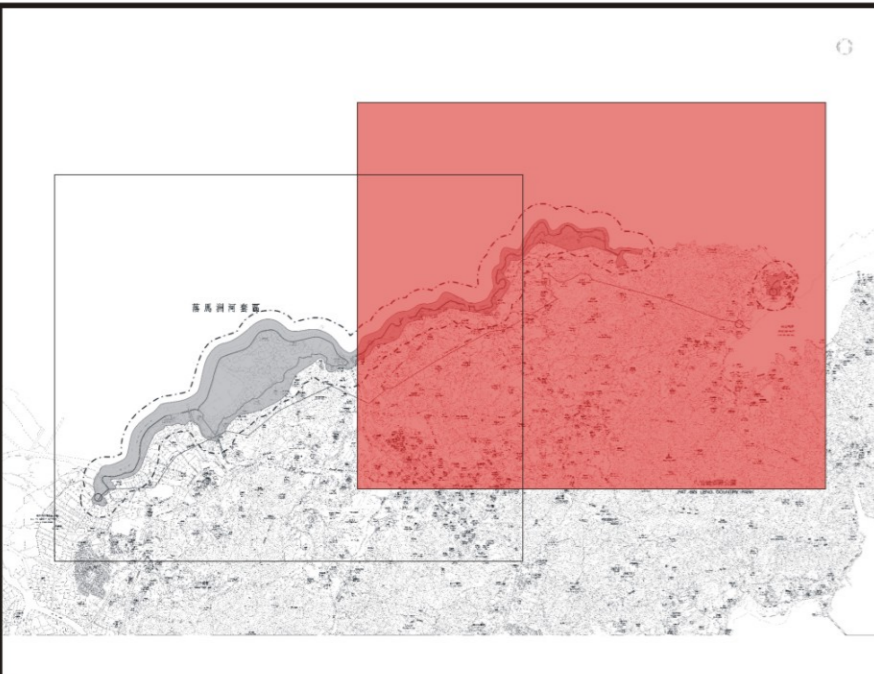
Rev	Date	Drawn	Description	Ch'kd	App'd
Client					
Project: CONSTRUCTION OF A SECONDARY BOUNDARY FENCE AND NEW SECTIONS OF PRIMARY BOUNDARY FENCE AND BOUNDARY PATROL ROAD					
Title: Visual Envelope and Zone of Visual Influence					
Designed	TEAM	Eng.Chk.	---		
Drawn	JOE	Coordination	---		
Dwg.Chk.	ELK	Approved	CJF		
Scale	Project	216727	Status		
As Shown	CAD File	---	---		
Drawing No.	Figure 7-6A			Rev	A

This document should not be relied on or used in circumstances other than those for which it was originally prepared and for which Mott MacDonald Hong Kong Limited was commissioned. Mott MacDonald Hong Kong Limited accepts no responsibility for this document to any other party than the person by whom it was commissioned.










0 250 500 750 1250 m

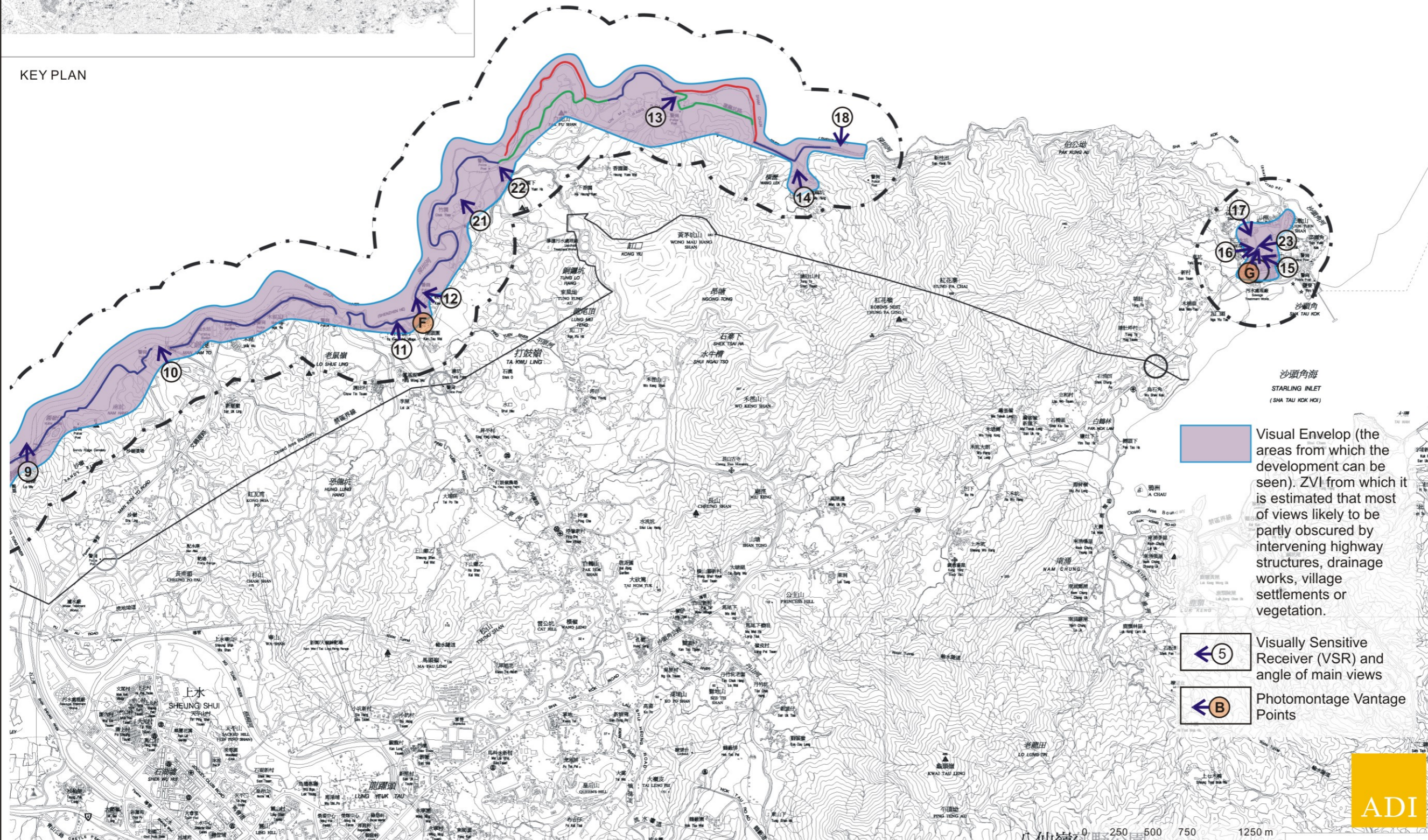
© COPYRIGHT RESERVED






KEY PLAN





- Legend**
-  500M Study Area
 -  Frontier Closed Area
 -  Proposed secondary boundary fence along existing boundary patrol road
 -  Proposed new boundary patrol road with primary and secondary boundary fences
 -  Existing boundary fence to be removed
 -  Existing check point to be removed
 -  Proposed new check point



 Visual Envelop (the areas from which the development can be seen). ZVI from which it is estimated that most of views likely to be partly obscured by intervening highway structures, drainage works, village settlements or vegetation.

-  ⑤ Visually Sensitive Receiver (VSR) and angle of main views
-  ⑥ Photomontage Vantage Points

Rev	Date	Drawn	Description	Ch'k'd	App'd
Client	 ARCHITECTURAL SERVICES DEPARTMENT				
 Mott MacDonald Mott MacDonald Hong Kong Limited 7th Floor West Wing Office Building New World Centre 20 Solihbury Road Hong Kong Tel 2828 5757 Fax 2827 1823 Web www.mottmac.com.hk					
Project					
CONSTRUCTION OF A SECONDARY BOUNDARY FENCE AND NEW SECTIONS OF PRIMARY BOUNDARY FENCE AND BOUNDARY PATROL ROAD					
Title					
Visual Envelope and Zone of Visual Influence					
Designed	TEAM	Eng.Chk.	---		
Drawn	JOE	Coordination	---		
Dwg.Chk.	ELK	Approved	CJF		
Scale	Project	216727	Status		
As Shown	CAD File	---			
Drawing No.	Figure 7-6B			Rev	A

This document should not be relied on or used in circumstances other than those for which it was originally prepared and for which Mott MacDonald Hong Kong Limited was commissioned. Mott MacDonald Hong Kong Limited accepts no responsibility for this document to any other party than the person by whom it was commissioned.